



Glen Eden Primary School Newsletter

Issue 19
Week 10 | Term 2

Kia Ora GEPS Whānau

Nau mai haere mai Yoshiki, Peter & Daniel

Tuatahi we are thrilled to announce that Mr and Mrs Hogan are now the proud parents of a baby girl. Elise arrived on Saturday and all of the family are happy and well.

Congratulations to our rugby teams who competed at the interschool tournament last week. Our girls team came third and both teams played well all day. Thank you to Mr Pulman and to Michelle for all of the coaching. Thanks also to Mr Jack Schouaib, Michelle and all of the whānau who took and supported the teams on the day.

A huge thank you to everyone who came to our parent evening last week on Raising Confident and Resilient Kids. We plan to hold another parent evening next term around digital safety,

Next week reports will come home. A reminder that the Ministry's curriculum expectations have changed and continue to evolve. This means that a report today cannot always be directly compared with reports from previous years.

A change in your child's reporting band does not mean they have gone backwards. As the New Zealand Curriculum is refreshed, the Ministry of Education has introduced different, higher expectations for each year level. Teachers are also using updated guidance and assessment information to make their overall judgements. This means a child may continue to make good progress while their achievement band changes to reflect the new curriculum expectations. Our focus is on understanding each learner's progress, identifying next steps, and providing the support and challenge they need to succeed.

With the end of term looming, our lost property shed is very full. We will endeavour to put these out at the end of the day around the playground so please come and see if any of these clothes belong to your tamariki. Classes will also have the opportunity to look at these clothes.

This Thursday is our annual Break the Ice swim for students in Years 4-6. Thanks Beven for keeping our pool looking so very good, even in winter months. Remember to check out Facebook for all of the photos of the event.

<https://www.facebook.com/geps.school.nz>

A reminder that the Columbus challenge to win coffee and hot chocolate for the school is closing soon. Remember to vote for us if you happen to shop there.

Last week Tūi team had STRIKE, a percussion group, play for them while Kiwi and Takahē had PERFORM in. Both groups' feedback about our students and how they behave and support each other was fabulous. We often receive feedback like this about the tamariki at GEPS and how great they are.

Donna Soljan

Glen Eden Primary School
3 Glenview Rd, Glen Eden
Auckland 0602
☎ (09) 818 6686
✉ office@geps.school.nz

www.geps.school.nz



Kairangi



Whanaungatanga



Manaakitanga



Ako

Happenings

T2 WK10/11 2026

DATES	HAPPENINGS
Tuesday 23 Jun Lunch – BBQ meatballs on mash with veggies. (Vegetarian & Halal alternatives)	R7 & R10 @ Corbans
Wednesday 24 Jun Lunch – Beef nachos with corn chips & grated cheese. (Vegetarian & Halal alternatives)	R2 & R13 @ Corbans
Thursday 25 Jun Lunch – Crumbed fish with curry sauce on rice with veggies. (Vegetarian & Halal alternatives)	Break the Ice swim for Yrs 4-6
Friday 26 Jun Lunch – Katsu chicken & mayo on rice with veggies. (Vegetarian & Halal alternatives)	Whanau open afternoon has now been cancelled.
Monday 29 Jun Lunch – Beef nachos with corn chips & grated cheese. (Vegetarian & Halal alternatives)	R3 Assembly @ 2.15pm
Tuesday 30 Jun Lunch – Crumbed fish on rice with veggies & tartare sauce. (Vegetarian & Halal alternatives)	BOT Hui at 6pm
Wednesday 01 Jul Lunch – Butter chicken on rice with veggies. (Vegetarian & Halal alternatives)	
Thursday 02 Jul Lunch – Mataraki shared kai. (Vegetarian & Halal options)	Mataraki Celebration
Friday 03 Jul Lunch – Beef burger with fresh salad & sauce. (Vegetarian & Halal alternatives)	Last day of Term 2
NOTES: Term 2 finishes Term 3 2026 starts	Friday 03 July 2026 Monday 20 July 2026

Get involved

Support
your local
school!

WIN A COLUMBUS COFFEE SHOUT — FOR YOUR SCHOOL! —

HOW IT WORKS:



Make any
purchase in-store



Receive
a token



Vote for
your school



1st June – 27th June



THE WINNING SCHOOL GETS:



A Columbus
Coffee Cart Visit



Free coffees &
hot chocolates



For staff
& students



Delivered in the
last week of term

COLUMBUS®
COFFEE
— **GLEN EDEN** —

142 West Coast Road, Glen Eden
(next to Fresh Choice supermarket)

— VOTE IN-STORE & SUPPORT YOUR SCHOOL! —

sKIDS



Launching 10 June

Wednesdays

Taste TREK



Wednesday 10th June

Food Groups

Learn all about the 5 food groups and how they help our bodies grow!



Wednesday 17th June

Plant to Plate

Discover where food begins as you explore the journey from seed to harvest.



Wednesday 24th June

Taste the Seasons

Learn why food grows at certain times of year and how it affects taste and nutrition.



Wednesday 1 July

sKIDS to Home

Make something fresh, tasty and made with love to take home and share with your family.



Book
TERM 2
now!

Where play *meets* potential



MPHS PRESENTS

FREE YOUTH SELF DEFENCE WORKSHOP

8-18 YRS OLD

FREE

PIZZA

WEAR →
CLOTHING

WITH NO
← **ZIPS OR**
BUTTONS




BOXING
GLOVES

& SHIN
GUARDS

PROVIDED
ON THE
DAY

GLEN EDEN COMMUNITY HOUSE
WED 24 JUNE | 4PM-5.30PM
FOR MORE INFO CALL 838 4820 OR EMAIL INFO@MPHS.ORG.NZ



Childs Full Name _____ Date of Birth ____ / ____ / ____

Parent/Guardian Name _____ Relationship to Participant _____

Mobile Number _____ Emergency Contact Number _____

Please list any medical conditions / allergies, or physical limitations the instructors should be aware of

Safety, Liability, and Release Clause

Please read the following clauses carefully before signing. Assumption of Risk: I understand that this self-defense workshop involves physical activity, technique demonstration, and controlled practice. While safety is the highest priority, these activities carry an inherent risk of physical injury . I explicitly assume all risks associated with my child's participation.

I grant permission for MPHS to take photos/videos of my child for promotional purposes YES / NO

_____ Parent/Guardian Signature:

_____ Date: _____





ladder & thread presents
**A Magical Theatre
Show for Kids**

Rumpelstiltskin



JULY 8-11

 **creative**
COMMUNITIES *nz*



Rumpelstiltskin

Join us in the school holidays on a magical quest where you will meet a greedy king, a mysterious imp, a boastful father, his brave daughter and maybe even a yeti!

An original retelling of a beloved classic, this innovative theatre adventure features live music, physical theatre, puppetry and gold galore.

Rumplestiltskin is a fun holiday activity that is performed by professional actors. It has been devised with children aged 3 - 10 in mind but will charm children and adults alike. We look forward to seeing you there!

July 8 - 11 2026

Oratia Settlers' Hall

569 West Coast Rd, Oratia

2 shows daily 10.30am and 1pm

Tickets \$13 each or 4 for \$45

**Book at www.eventfinda.co.nz (service fee applies)
or pay cash at the door**

Further enquiries: ladderandthreadproductions@gmail.com



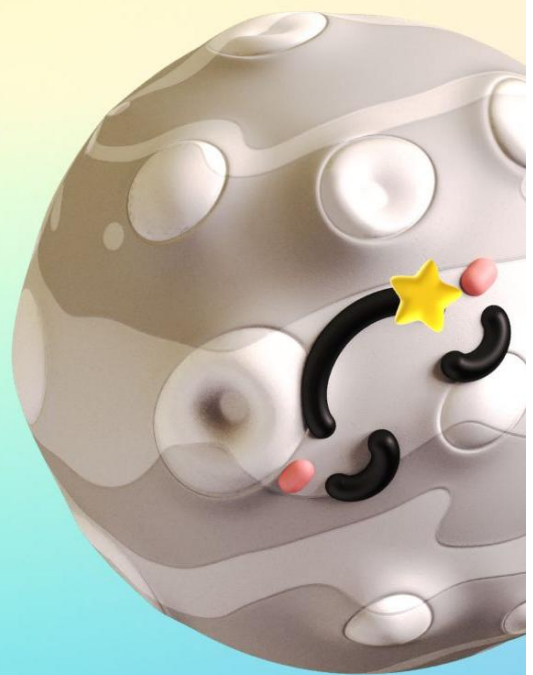
Little Scientists

Holiday programmes



5-10 year olds
Loads of science fun
to keep your children
busy this July!

Use code
FULLWEEK15
for bookings
made for a
whole week to
get 15% off



www.littlescientists.co.nz

少林功夫學校

Discipline. Confidence. Focus.

Now at Glen Eden Primary School Hall

A Structured Martial Arts Practice

- A traditional Kung Fu system that develops character and skill
- Structured training that builds discipline, confidence, and resilience
- Supportive, family-focused environment with clear standards

Training Times

Mondays & Wednesdays

- Children (ages **7 to 11**): 6:15 - 7:15pm
- Teens (ages **12 to 16**): 7:15 - 8:45pm
- Adults (ages **17+**): 7:15 - 8:45pm

Contact Us Benjamin Sheward

gleneden@shaolinkungfu.co.nz

021 643 437

**Intro Offer:
50% Off First
Term**

Term 2 enrolments - Limited spaces



Book a
Free Trial
Class



Scan to book instantly

KELIFEST



KELSTON INT PRESENTS

KELIFEST

CULTURAL FESTIVAL

GOLD COIN ENTRY 16 OCTOBER 2026 | OPEN 8AM

Logos of participating schools: Kelston Intermediate School, St Leonards - Māori School, Glendene School, and others.



Public Health Nurse

Kia Ora Whanau

A school public health nurse is available to discuss any concerns about your child's health, growth and development. This includes health assessments, health promotion, immunisation and home visiting. They are also able to help with skin and ear infections, asthma and eczema, bedwetting and soiling, hearing and vision concerns, linking to health and social services and advice about any other health concerns.

They can be contacted via childandfamilywest.wth@waitematadhb.govt.nz.

Nga Mihi

Public Health Nurse
Child & Family West
Level 1 Snelgar Building
55-77 Lincoln road, Private bag 93-115
Mob. 021 242 3051
childandfamilywest.wth@waitematadhb.govt.nz

PLEASE SUPPORT OUR ADVERTISERS WHO ARE SUPPORTING OUR SCHOOL

educatum

THE EDUCATION CONTINUUM...

Supporting young learners to gain
incremental improvement
with tutoring tailored to their unique needs.

FLEXIBLE LEARNING

GROUP TUITION PERSONAL TUITION	YEAR 1-13 MATHS	YEAR 7 - 10 SCIENCE	NCEA & CAMBRIDGE
---	--------------------	------------------------	---------------------

Contact us today to discuss how our unique approach can help your child reach their true learning potential.

Visit www.educatum.nz | FREEPHONE 0800 355 755

freshchoice glen eden

Proud to support
Glen Eden Primary School

142 West Coast Road, Glen Eden
Phone 813 9030

Open 7am - 10pm, 7 days.



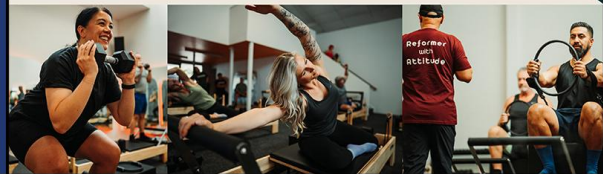
Use Code:
GE50



Reformer with Attitude
25 Veronica St, New Lynn

50% OFF

5 Class Trial



FREE
INTRODUCTORY
LESSON / ASSESSMENT
3rd FAMILY
MEMBER FREE
TERM DISCOUNTS APPLY

All Ages 3 Months to 80 plus
BEGINNER AND ADVANCED
CLASSES
AVAILABLE 7 DAYS

Monday to Friday 3.30pm to 6.00pm
Saturday and Sunday 9.00am to 1.30pm
Classes for all ages from 3 months also available 7 days

**SPECIALS
OFTEN
AVAILABLE**



Waterhole Swimming Centre

Parrs Park, West Coast Rd, Glen Eden
Phone 09 818 2312

www.waterholeswimcentre.kiwi

RSA GLEN EDEN RSA

www.glenedenrsa.co.nz • Ph: 818 4219 or see our facebook page

Thursday Night Club Night - Jokers Wild, Monster Meat Raffles, Quiz Night & more

Friday Nights - Karaoke • Sky Sports on our big screen TVs • Meat Pack Raffles

Saturday Nights - Bands/Shows Sunday Sessions - Music 4pm to 7pm • Restaurant opens 5.30pm



The Foothills Restaurant
All Welcome
Great Food Great Prices

Lounge Hire available for Functions • Yearly membership only \$40



Glen Eden Community House

We offer:
Before & After School Care
School Holiday Programmes
Van pickup and drop off to GEPS
MSD Approved for OSCAR
Subsidies

*Affordable, caring, committed and experienced staff
Small numbers allows for a friendly environment*

13 Pisces Road, Glen Eden

Phone: 09 818 2194 / 021 133 0358
osc@glenedencommunityhouse.co.nz
www.glenedencommunityhouse.co.nz



Living life your way.

**VILLAS • APARTMENTS
ON-SITE HOSPITAL**



GREENVIEW PARK
RETIREMENT VILLAGE
& TERENCE KENNEDY HOUSE

www.greenviewpark.co.nz

Rosemary Giborees
Residential Sales

**BARFOOT
THOMPSON &**

With 25 years in Real Estate, you will not be disappointed with my marketing and negotiating skills. Put your home in my capable hands, so you can achieve the top price you're looking for.



Call or Text **027 283 3140**
or Email r.giborees@barfoot.co.nz

To advertise on this newsletter and support the school, please contact Newsletters Unlimited, Ph/Fax: 09 817 3867, or Email: newsletters@xtra.co.nz
www.newslettersunlimited.co.nz