



Glen Eden Primary School Newsletter

Issue 18
Week 9 | Term 2

Kia Ora GEPS Whānau

Nau mai haere mai Ashleena, Pippa & Matthias

Last week many of our tamariki had the opportunity to take part in drama classes run by TAPAC. The students had an amazing time and the tutors were extremely complimentary about our school and how our tamariki performed. Students also got to view some drama with a show called "Recycling Right" last Tuesday.

Our parent evening is this **Wednesday 17 June**. We will have pizzas available in the wharekai from 5:30pm. Come and grab a slice or two and then head into the hall for the evening which will start at 6pm. Children will be looked after in the library as the talk is for parents only in the hall. The topic is raising confident and resilient kids. Please can you RSVP via the HERO link or send an email to donnas@geps.school.nz if you are coming. We need numbers for catering purposes.

Thanks to Mr Shouaib the library is open from 8:15 each morning with World Cup football games on the TV. All are welcome to come and watch.

The wharekai is also open every morning for those who wish to pop in and have breakfast. There are kai baskets in every room as well in case tamariki are hungry throughout the day. Lunches are still delivered daily. We recently met with the food providers to give feedback on the new meals and look forward to these being even better in future.

A reminder that we have warm winter jackets at school. We also have nit treatment & combs should you need either. Just pop into the office for nit treatment and we can get some for you - we cannot guarantee all jacket sizes are available as many have been given out. We are thankful to KidsCan for supplying these for our kura.

Sadly at the end of this term we farewell Attendance West from our kura. They now need a space where they can run programmes for secondary students on site and so are moving on from being hosted at GEPS. They will still be working with us on attendance matters.

There are still 3 weeks to go in Term 2. Reports will be coming home at the end of this term which finishes on Friday 3rd July.

Donna Soljan

Glen Eden Primary School
3 Glenview Rd, Glen Eden
Auckland 0602
☎ (09) 818 6686
✉ office@geps.school.nz

www.geps.school.nz



Kairangi



Whanaungatanga



Manaakitanga



Ako

Happenings

T2 WK9/10 2026

DATES	HAPPENINGS
Tuesday 16 Jun Lunch – Beef ragu with mash & veggies. (Vegetarian & Halal alternatives)	Interschool tackle rugby
Wednesday 17 Jun Lunch – Creamy chicken carbonara with veggies. (Vegetarian & Halal alternatives)	Parenting Talk – the parenting place. Kai from 5.30pm & talk from 6pm onwards.
Thursday 18 Jun Lunch – Butter chicken on rice with veggies. (Vegetarian & Halal alternatives)	
Friday 19 Jun Lunch – Beef nachos with corn chips & grated cheese. (Vegetarian & Halal alternatives)	
Monday 22 Jun Lunch – Chicken bolognese with pasta. (Vegetarian & Halal alternatives)	R7 Assembly @ 2.15pm
Tuesday 23 Jun Lunch – BBQ meatballs on mash with veggies. (Vegetarian & Halal alternatives)	Tui Team @ Corbans
Wednesday 24 Jun Lunch – Beef nachos with corn chips & grated cheese. (Vegetarian & Halal alternatives)	Tui Team @ Corbans
Thursday 25 Jun Lunch – Crumbed fish with curry sauce on rice with veggies. (Vegetarian & Halal alternatives)	Break the Ice swim
Friday 26 Jun Lunch – Katsu chicken & mayo on rice with veggies. (Vegetarian & Halal alternatives)	Whanau open afternoon from 2.15pm
NOTES: Term 2 finishes Term 3 2026 starts	Friday 03 July 2026 Monday 20 July 2026

Parenting Talk

Raising confident and resilient kids



DATE
6pm
Wednesday
17 June

VENUE
Glen Eden
Primary School

RSVP
To class teacher
via HERO app

FREE event

Pizza in Wharekai
from 5.30pm

We can't control life, but we can control the way we *respond* to it

This talk sheds light on the struggles that can hold our kids back, while offering parenting tools to make the most of character-growth moments.

Relatable and inspiring, you'll come away with the injection of hope you need to raise confident and resilient kids.



Sheridan Ekstone, Parent Coach

Sheridan Ekstone is passionate about shaping the hearts of the next generation through great parenting. Mum of four teenagers, Sheridan is grateful to her own tamariki for teaching her the importance of connection when it comes to raising confident and resilient kids.

Get involved

Support
your local
school!

WIN A COLUMBUS COFFEE SHOUT — FOR YOUR SCHOOL! —

HOW IT WORKS:



Make any
purchase in-store



Receive
a token



Vote for
your school



1st June – 27th June



THE WINNING SCHOOL GETS:



A Columbus
Coffee Cart Visit



Free coffees &
hot chocolates



For staff
& students



Delivered in the
last week of term

COLUMBUS®
COFFEE
— **GLEN EDEN** —

142 West Coast Road, Glen Eden
(next to Fresh Choice supermarket)

— VOTE IN-STORE & SUPPORT YOUR SCHOOL! —

sKids



Launching 10 June

Wednesdays

Taste TREK



Wednesday 10th June

Food Groups

Learn all about the 5 food groups and how they help our bodies grow!



Wednesday 17th June

Plant to Plate

Discover where food begins as you explore the journey from seed to harvest.



Wednesday 24th June

Taste the Seasons

Learn why food grows at certain times of year and how it affects taste and nutrition.



Wednesday 1 July

sKids to Home

Make something fresh, tasty and made with love to take home and share with your family.



Book
TERM 2
now!

Where play *meets* potential

Company of Giants presents

A VAUDEVILLE OF

FLOWERS



16-20 JUNE | THE PUMPHOUSE THEATRE

Company of Giants presents a wild and wonderful collection of acts celebrating the extraordinary and the ordinary in our own backyard. Songs, poetry, mime performed by a troupe of puppets, animals, clowns and flowers. Explore the familiarity of the domestic and the mundane, draped in a blanket of glitter.

A world-class theatre production for young and old.

Visit pumphouse.co.nz for more details and tickets.

Company of Giants

The Pumphouse
Theatre

creative
COMMUNITIES nz

20 JUNE, 10 AM – 2 PM
13 PISCES ROAD, GLEN EDEN

BIKE BONANZA

LEARN TO FIX YOUR BIKE!



GLEN EDEN
COMMUNITY HOUSE



EcoMatters



ladder & thread presents
**A Magical Theatre
Show for Kids**

Rumpelstiltskin



JULY 8-11

 creative
COMMUNITIES *nz*



Rumpelstiltskin

Join us in the school holidays on a magical quest where you will meet a greedy king, a mysterious imp, a boastful father, his brave daughter and maybe even a yeti!

An original retelling of a beloved classic, this innovative theatre adventure features live music, physical theatre, puppetry and gold galore.

Rumplestiltskin is a fun holiday activity that is performed by professional actors. It has been devised with children aged 3 - 10 in mind but will charm children and adults alike. We look forward to seeing you there!

July 8 - 11 2026

Oratia Settlers' Hall

569 West Coast Rd, Oratia

2 shows daily 10.30am and 1pm

Tickets \$13 each or 4 for \$45

**Book at www.eventfinda.co.nz (service fee applies)
or pay cash at the door**

Further enquiries: ladderandthreadproductions@gmail.com



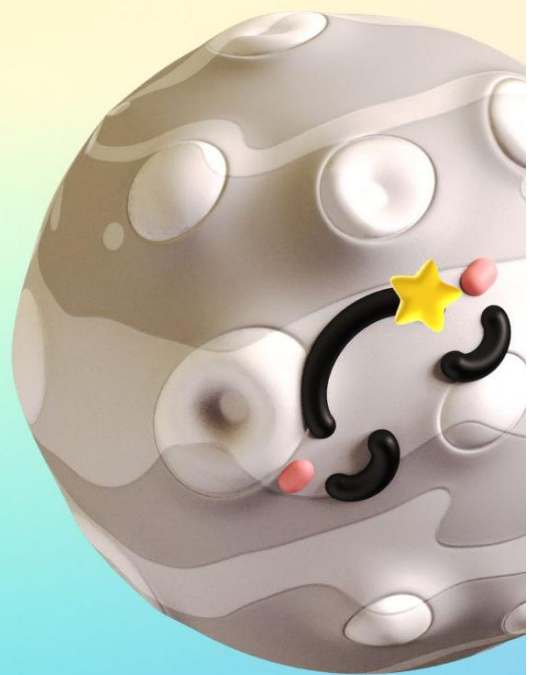
Little Scientists

Holiday programmes



5-10 year olds
Loads of science fun
to keep your children
busy this July!

Use code
FULLWEEK15
for bookings
made for a
whole week to
get 15% off



www.littlescientists.co.nz

少林功夫學校

Discipline. Confidence. Focus.

Now at Glen Eden Primary School Hall

A Structured Martial Arts Practice

- A traditional Kung Fu system that develops character and skill
- Structured training that builds discipline, confidence, and resilience
- Supportive, family-focused environment with clear standards

Training Times

Mondays & Wednesdays

- Children (ages **7 to 11**): 6:15 - 7:15pm
- Teens (ages **12 to 16**): 7:15 - 8:45pm
- Adults (ages **17+**): 7:15 - 8:45pm

Contact Us Benjamin Sheward

gleneden@shaolinkungfu.co.nz

021 643 437

**Intro Offer:
50% Off First
Term**

Term 2 enrolments - Limited spaces



Book a
**Free Trial
Class**



Scan to book instantly

KELIFEST

KELSTON INT PRESENTS

KELIFEST

CULTURAL FESTIVAL

GOLD COIN ENTRY 16 OCTOBER 2026 | OPEN 8AM

Logos of participating schools: Kelston Intermediate School, St Leonards - Māori School, Glendene School, and others.

The poster features a collage of cultural performances. On the left, a woman in a traditional Maori costume with a large feathered headdress and a man in a grey jacket. In the center, the Kelston Intermediate School logo. On the right, a woman in a red and blue costume with a conical hat, and a man playing a wooden instrument. At the bottom, a large group of performers in various costumes, including blue and red outfits, posing for a group photo.



Public Health Nurse

Kia Ora Whanau

A school public health nurse is available to discuss any concerns about your child's health, growth and development. This includes health assessments, health promotion, immunisation and home visiting. They are also able to help with skin and ear infections, asthma and eczema, bedwetting and soiling, hearing and vision concerns, linking to health and social services and advice about any other health concerns.

They can be contacted via childandfamilywest.wth@waitematadhb.govt.nz.

Nga Mihi

Public Health Nurse
Child & Family West
Level 1 Snelgar Building
55-77 Lincoln road, Private bag 93-115
Mob. 021 242 3051
childandfamilywest.wth@waitematadhb.govt.nz

PLEASE SUPPORT OUR ADVERTISERS WHO ARE SUPPORTING OUR SCHOOL

educatum

THE EDUCATION CONTINUUM...

Supporting young learners to gain
incremental improvement
with tutoring tailored to their unique needs.

FLEXIBLE LEARNING

GROUP TUITION PERSONAL TUITION	YEAR 1-13 MATHS	YEAR 7 - 10 SCIENCE	NCEA & CAMBRIDGE
---	--------------------	------------------------	---------------------

Contact us today to discuss how our unique approach can help your child reach their true learning potential.

Visit www.educatum.nz | FREEPHONE 0800 355 755

freshchoice glen eden

Proud to support
Glen Eden Primary School

142 West Coast Road, Glen Eden
Phone 813 9030

Open 7am - 10pm, 7 days.



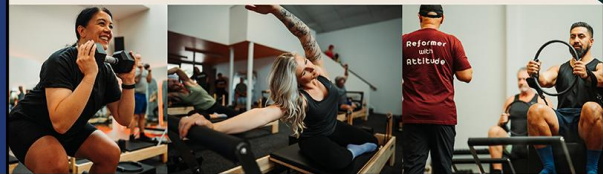
Use Code:
GE50



Reformer with Attitude
25 Veronica St, New Lynn

50% OFF

5 Class Trial



FREE
INTRODUCTORY
LESSON / ASSESSMENT
3rd FAMILY
MEMBER FREE
TERM DISCOUNTS APPLY

All Ages 3 Months to 80 plus
BEGINNER AND ADVANCED
CLASSES
AVAILABLE 7 DAYS

Monday to Friday 3.30pm to 6.00pm
Saturday and Sunday 9.00am to 1.30pm
Classes for all ages from 3 months also available 7 days

**SPECIALS
OFTEN
AVAILABLE**



Waterhole Swimming Centre

Parrs Park, West Coast Rd, Glen Eden
Phone 09 818 2312

www.waterholeswimcentre.kiwi

RSA GLEN EDEN RSA

www.glenedenrsa.co.nz • Ph: 818 4219 or see our facebook page

Thursday Night Club Night - Jokers Wild, Monster Meat Raffles, Quiz Night & more

Friday Nights - Karaoke • Sky Sports on our big screen TVs • Meat Pack Raffles

Saturday Nights - Bands/Shows Sunday Sessions - Music 4pm to 7pm • Restaurant opens 5.30pm



The Foothills Restaurant
All Welcome
Great Food Great Prices

Lounge Hire available for Functions • Yearly membership only \$40



Glen Eden Community House

We offer:
Before & After School Care
School Holiday Programmes
Van pickup and drop off to GEPS
MSD Approved for OSCAR
Subsidies

*Affordable, caring, committed and experienced staff
Small numbers allows for a friendly environment*

13 Pisces Road, Glen Eden

Phone: 09 818 2194 / 021 133 0358
osc@glenedencommunityhouse.co.nz
www.glenedencommunityhouse.co.nz

Rosemary Giborees
Residential Sales

With 25 years in Real Estate,
you will not be disappointed
with my marketing and negotiating
skills. Put your home in my capable
hands, so you can achieve the top
price you're looking for.

Call or Text **027 283 3140**
or Email r.giborees@barfoot.co.nz

**BARFOOT
THOMPSON &**



Living life your way.

**VILLAS • APARTMENTS
ON-SITE HOSPITAL**



GREENVIEW PARK
RETIREMENT VILLAGE
& TERENCE KENNEDY HOUSE

www.greenviewpark.co.nz

To advertise on this newsletter and support the school, please contact Newsletters Unlimited, Ph/Fax: 09 817 3867, or Email: newsletters@xtra.co.nz
www.newslettersunlimited.co.nz