



Glen Eden Primary School Newsletter

Issue 17
Week 8 | Term 2

Kia Ora GEPS Whānau

Nau mai haere mai Shakya

Recently GEPS conducted a lockdown drill which is overseen by Harrison Tew, experts in the field. This year Kelly Fakalata was in charge of running this drill. We have had all members of the leadership team go through leading this, so that in the event of an emergency, the response is not contingent on any one person being on site.

We have just received the outcome of the review and how the school did. Here is an excerpt from the Harrison Tew feedback:

Communication pathways were exercised, including internal notification systems and procedures for engagement with external stakeholders (including whānau, emergency services, and relevant agencies). Glen Eden Primary School met all objectives by capably and effectively activating their Emergency Management plan under exercise conditions. This demonstrates a clear commitment to ensuring the safety and welfare of students and staff in response to the simulated emergency.

Though it was a very short week last week, it was great to celebrate Samoan language week. Due to the three day week many classes will continue the learning over the next few weeks. Thanks again to Liz, Arasi and all of the staff who helped with the set up and activities.

A huge thank you to everyone who came to the Maths and a Meal evening. We really appreciated it! We think it was our best turn out ever. As always any suggestions on how we can improve these events are welcomed. Please email donnas@geps.school.nz with any feedback.

Our next parent evening is next **Wednesday 17 June**. We will have pizzas available in the wharekai from 5:30pm. Come and grab a slice or two and then head into the hall for the evening which will start at 6pm. Children will be looked after in the library. The talk is for parents only in the hall. The topic is Raising confident and resilient kids.

A reminder that Columbus Coffee is running a promotion where we can win coffees and hot chocolate for the whole school. Spread the word if you have whānau and friends who are customers. See details below for this.

Finally thank you to everyone for accommodating our MOE mandated staff only day on Friday. It was a full day of learning for all staff and was extremely worthwhile.

Donna Soljan

Glen Eden Primary School
3 Glenview Rd, Glen Eden
Auckland 0602
☎ (09) 818 6686
✉ office@geps.school.nz

www.geps.school.nz



Kairangi



Whanaungatanga



Manaakitanga



Ako

Happenings

T2 WK8/9 2026

DATES	HAPPENINGS
Tuesday 09 Jun Lunch – Crumbed fish on rice with veggies & tartare sauce. (Vegetarian & Halal alternatives)	
Wednesday 10 Jun Lunch – Creamy chicken spinach & pea pasta bake. (Vegetarian & Halal alternatives)	
Thursday 11 Jun Lunch – Crumbed chicken on mash with veggies & tomato sauce. (Vegetarian & Halal alternatives)	OOZ Enrolment ballot for T3 @ 2pm
Friday 12 Jun Lunch – Beef burger with fresh salad & sauce. (Vegetarian & Halal alternatives)	
Monday 15 Jun Lunch – Sweet & sour chicken with veggies on rice. (Vegetarian & Halal alternatives)	R3 Assembly @ 2.15pm
Tuesday 16 Jun Lunch – Beef ragu with mash & veggies. (Vegetarian & Halal alternatives)	Interschool tackle rugby
Wednesday 17 Jun Lunch – Creamy chicken carbonara with veggies. (Vegetarian & Halal alternatives)	Parenting Talk – the parenting place. Kai from 5.30pm & talk from 6pm onwards.
Thursday 18 Jun Lunch – Butter chicken on rice with veggies. (Vegetarian & Halal alternatives)	
Friday 19 Jun Lunch – Beef nachos with corn chips & grated cheese. (Vegetarian & Halal alternatives)	
NOTES: Term 2 finishes Term 3 2026 starts	Friday 03 July 2026 Monday 20 July 2026

Get involved

Support
your local
school!

WIN A COLUMBUS COFFEE SHOUT — FOR YOUR SCHOOL! —

HOW IT WORKS:



Make any
purchase in-store



Receive
a token



Vote for
your school



1st June – 27th June



THE WINNING SCHOOL GETS:



A Columbus
Coffee Cart Visit



Free coffees &
hot chocolates



For staff
& students



Delivered in the
last week of term

COLUMBUS®
COFFEE
— **GLEN EDEN** —

142 West Coast Road, Glen Eden
(next to Fresh Choice supermarket)

— VOTE IN-STORE & SUPPORT YOUR SCHOOL! —

Parenting Talk

Raising confident and resilient kids



DATE
6pm
Wednesday
17 June

VENUE
Glen Eden
Primary School

RSVP
To class teacher
via HERO app

FREE event

Pizza in Wharekai
from 5.30pm

We can't control life, but we can control the way we *respond* to it

This talk sheds light on the struggles that can hold our kids back, while offering parenting tools to make the most of character-growth moments.

Relatable and inspiring, you'll come away with the injection of hope you need to raise confident and resilient kids.



Sheridan Ekstone, Parent Coach

Sheridan Ekstone is passionate about shaping the hearts of the next generation through great parenting. Mum of four teenagers, Sheridan is grateful to her own tamariki for teaching her the importance of connection when it comes to raising confident and resilient kids.

sKIDS



Wednesdays

MOVE masters

TERM 2 PROGRAMME



Wednesday 6th May
Power Play

Kids build fundamental movement skills through exciting games and fast-paced activities.



Wednesday 13th May
Motion Squad

Ready, set, go! This week is all about racing, relays, and rapid fire fun as you dash your way to victory!



Wednesday 20th May
Skill Sprint

Put your logic and memory to the test in a week filled with tricky tasks and mental missions.



Wednesday 27th May
Action Academy

Kids try new movements, learn new skills and build confidence through guided action, practice and play.



Wednesday 3rd June
Move & Groove

High-speed mini missions and thrilling challenges that keep everyone moving, thinking and competing.

Launching
6 May!



Book
TERM 2
now!



Where play *meets* potential

sKids



Launching 10 June

Wednesdays

Taste TREK



Wednesday 10th June

Food Groups

Learn all about the 5 food groups and how they help our bodies grow!



Wednesday 17th June

Plant to Plate

Discover where food begins as you explore the journey from seed to harvest.



Wednesday 24th June

Taste the Seasons

Learn why food grows at certain times of year and how it affects taste and nutrition.



Wednesday 1 July

sKids to Home

Make something fresh, tasty and made with love to take home and share with your family.



Book
TERM 2
now!

Where play *meets* potential

Company of Giants presents

A VAUDEVILLE OF

FLOWERS



16-20 JUNE | THE PUMPHOUSE THEATRE

Company of Giants presents a wild and wonderful collection of acts celebrating the extraordinary and the ordinary in our own backyard. Songs, poetry, mime performed by a troupe of puppets, animals, clowns and flowers. Explore the familiarity of the domestic and the mundane, draped in a blanket of glitter.

A world-class theatre production for young and old.

Visit pumphouse.co.nz for more details and tickets.

Company of Giants

The Pumphouse
Theatre

creative
COMMUNITIES nz



20 JUNE, 10 AM – 2 PM
13 PISCES ROAD, GLEN EDEN

BIKE BONANZA

LEARN TO FIX YOUR BIKE!



GLEN EDEN
COMMUNITY HOUSE



EcoMatters

少林功夫學校

Discipline. Confidence. Focus.

Now at Glen Eden Primary School Hall

A Structured Martial Arts Practice

- A traditional Kung Fu system that develops character and skill
- Structured training that builds discipline, confidence, and resilience
- Supportive, family-focused environment with clear standards

Training Times

Mondays & Wednesdays

- Children (ages **7 to 11**): 6:15 - 7:15pm
- Teens (ages **12 to 16**): 7:15 - 8:45pm
- Adults (ages **17+**): 7:15 - 8:45pm

Contact Us Benjamin Sheward

gleneden@shaolinkungfu.co.nz

021 643 437

Intro Offer:
50% Off First
Term

Term 2 enrolments - Limited spaces

Book a
Free Trial
Class



Scan to book instantly



ShaolinKungFu.co.nz



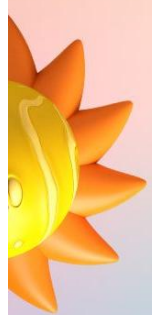
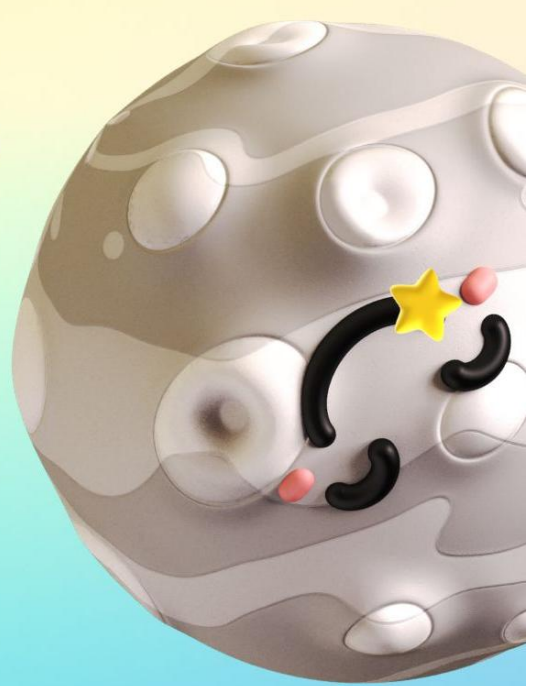
Little Scientists

Holiday programmes



5-10 year olds
Loads of science fun
to keep your children
busy this July!

Use code
FULLWEEK15
for bookings
made for a
whole week to
get 15% off



www.littlescientists.co.nz



Public Health Nurse

Kia Ora Whanau

A school public health nurse is available to discuss any concerns about your child's health, growth and development. This includes health assessments, health promotion, immunisation and home visiting. They are also able to help with skin and ear infections, asthma and eczema, bedwetting and soiling, hearing and vision concerns, linking to health and social services and advice about any other health concerns.

They can be contacted via childandfamilywest.wth@waitematadhb.govt.nz.

Nga Mihi

Public Health Nurse
Child & Family West
Level 1 Snelgar Building
55-77 Lincoln road, Private bag 93-115
Mob. 021 242 3051
childandfamilywest.wth@waitematadhb.govt.nz

PLEASE SUPPORT OUR ADVERTISERS WHO ARE SUPPORTING OUR SCHOOL

educatum

THE EDUCATION CONTINUUM...

Supporting young learners to gain
incremental improvement
with tutoring tailored to their unique needs.

FLEXIBLE LEARNING

GROUP TUITION PERSONAL TUITION	YEAR 1-13 MATHS	YEAR 7 - 10 SCIENCE	NCEA & CAMBRIDGE
---	--------------------	------------------------	---------------------

Contact us today to discuss how our unique approach can help your child reach their true learning potential.

Visit www.educatum.nz | FREEPHONE 0800 355 755

freshchoice glen eden

Proud to support
Glen Eden Primary School

142 West Coast Road, Glen Eden
Phone 813 9030

Open 7am - 10pm, 7 days.



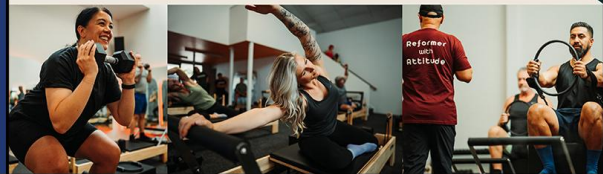
Rebel
PILATES

50% OFF

Use Code:
GE50

Reformer with Attitude
25 Veronica St, New Lynn

5 Class Trial



FREE
INTRODUCTORY
LESSON / ASSESSMENT
3rd FAMILY
MEMBER FREE
TERM DISCOUNTS APPLY

All Ages 3 Months to 80 plus
BEGINNER AND ADVANCED
CLASSES
AVAILABLE 7 DAYS

Monday to Friday 3.30pm to 6.00pm
Saturday and Sunday 9.00am to 1.30pm
Classes for all ages from 3 months also available 7 days

**SPECIALS
OFTEN
AVAILABLE**



Waterhole Swimming Centre

Parrs Park, West Coast Rd, Glen Eden
Phone 09 818 2312

www.waterholeswimcentre.kiwi

RSA GLEN EDEN RSA

www.glenedenrsa.co.nz • Ph: 818 4219 or see our facebook page

Thursday Night Club Night - Jokers Wild, Monster Meat Raffles, Quiz Night & more

Friday Nights - Karaoke • Sky Sports on our big screen TVs • Meat Pack Raffles

Saturday Nights - Bands/Shows Sunday Sessions - Music 4pm to 7pm • Restaurant opens 5.30pm



The Foothills Restaurant
All Welcome
Great Food Great Prices

Lounge Hire available for Functions • Yearly membership only \$40



Glen Eden Community House

We offer:
Before & After School Care
School Holiday Programmes
Van pickup and drop off to GEPS
MSD Approved for OSCAR
Subsidies

*Affordable, caring, committed and experienced staff
Small numbers allows for a friendly environment*

13 Pisces Road, Glen Eden

Phone: 09 818 2194 / 021 133 0358
osc@glenedencommunityhouse.co.nz
www.glenedencommunityhouse.co.nz



Living life your way.

**VILLAS • APARTMENTS
ON-SITE HOSPITAL**



GREENVIEW PARK
RETIREMENT VILLAGE
& TERENCE KENNEDY HOUSE

www.greenviewpark.co.nz

Rosemary Giborees
Residential Sales

**BARFOOT
THOMPSON &**

With 25 years in Real Estate, you will not be disappointed with my marketing and negotiating skills. Put your home in my capable hands, so you can achieve the top price you're looking for.



Call or Text **027 283 3140**
or Email r.giborees@barfoot.co.nz

To advertise on this newsletter and support the school, please contact Newsletters Unlimited, Ph/Fax: 09 817 3867, or Email: newsletters@xtra.co.nz
www.newslettersunlimited.co.nz

09/25