



# Glen Eden Primary School Newsletter

Issue 40  
Week 11 | Term 4

## Kia Ora GEPS Whānau

As we reach the end of another school year, I want to take this opportunity to thank you for the part you have played in making 2025 such a meaningful year for our school community.

This year has been filled with learning, growth, challenge, and celebration. Our tamariki have shown curiosity, resilience, kindness, and perseverance. Guided by our school values of ako, manaakitanga, whanaungatanga, and kairangi, our students have supported one another, embraced new learning, and taken pride in who they are.

To our Year 6 students, we wish you every success as you move on to the next chapter of your learning journey. You leave behind a legacy of leadership, friendship, and contribution, and you will always be part of our school whānau.

I would also like to make special mention of the families who are leaving our school for the last time as your youngest children move on. Many of you have been part of our community for a number of years, contributing in countless ways—through involvement, support, and partnership. Thank you for the trust you have placed in us and for the role you have played in shaping our school. You leave with our gratitude and our very best wishes for what lies ahead.

To all our families and caregivers, thank you for your ongoing support—whether through learning at home, attending events, supporting trips and sports, or simply encouraging your child each day. Strong partnerships between home and school make a real difference, and we are truly appreciative of this.

I would also like to acknowledge our staff, who continue to go above and beyond for our learners. Their commitment, care, and professionalism ensure that our school remains a safe, inclusive, and inspiring place to learn.

This year we say farewell to four staff members; Liesl Crowther, Jess Lovegrove, Eve Spencer and Teuila Teau. We thank you for all that you have given to our tamariki, to our whānau and to our kura.

As we head into the summer break, I hope you are able to enjoy some well-earned rest, time together, and moments of joy. Hopefully many of you will make use of the school pool opening over the break. Please stay safe over the holidays and take time to recharge.

The school pool will be open daily from the 5th of January till the 24th of January. It will be open from 12pm-5pm Monday to Saturday. Children under 5 must be in arms reach of a supervising adult and children under 11 must have an adult actively supervising.

School stationery can be purchased from the office from Wednesday 28 January 1.30-3.00pm, Thursday 29 January 9.00am-4.00pm & Monday 02 February 9.00am-12noon.

You are welcome to come in and see your child's class and meet the 2026 teacher from 1:30-3:10 on Thursday 29 January. School starts on Tuesday 3rd February.

We look forward to welcoming you back in 2026, refreshed and ready for another year of learning and growth together.

*Donna Soljan*

Glen Eden Primary School  
3 Glenview Rd, Glen Eden  
Auckland 0602  
(09) 818 6686  
office@geps.school.nz

[www.geps.school.nz](http://www.geps.school.nz)



Kairangi



Whanaungatanga



Manaakitanga



Ako



# SUMMER BREAK SWIMMING

From Monday 5 January - Saturday 24 January  
2026

12:00pm-5:00pm  
Monday - Saturday  
Lifeguards Operating

GLEN EDEN PRIMARY SCHOOL





# Skids School Holiday Programme operating out of Glen Eden School from 17 – 19 December only



**skids Glen Eden**  
3 Glenview Road, Glen Eden  
Wednesday 17 December to Friday 19 December 2025

0800 274 172  
Site Ph: 027 267 8609

Scan for pricing and to book online!

[www.skids.co.nz/holiday-programmes](http://www.skids.co.nz/holiday-programmes)

**FULL DAYS: 7AM TO 5.30PM**  
**SHORT DAYS: 8AM TO 3PM**

WED 17 DEC	THU 18 DEC	FRI 19 DEC
 <p><b>SANTA'S WORKSHOP</b> <b>MAKE &amp; TAKE: KIWIANA GINGERBREAD BACH</b> Enjoy a merry day of festive creativity, laughter and holiday magic with us as we step into Santa's Workshop! We will be decorating our own individual wooden Kiwiana themed Gingerbread style bach's to take home. Plus, create your own DIY Christmas Ornaments.</p>	 <p><b>WORLDWIDE FESTIVITIES</b> Create colourful origami Santa stockings to hang on your trees or fireplaces, design and decorate paper lanterns. Journey around the globe with us as we explore how different cultures celebrate the festive season.</p>	 <p><b>KIWI CHRISTMAS</b> Celebrate the last day of 2025 HHQ with our Kiwi Christmas. Enjoy exciting North Pole Party games, create beautiful Pōhutukawa Christmas cards and wrap up the year with festive fun, creativity and festive cheer!</p>

Wishing you all a safe and happy festive season!



If applying for OSCAR subsidy, eligibility criteria will apply. Visit [www.skids.co.nz/oscar-subsidy](http://www.skids.co.nz/oscar-subsidy) for eligibility and entitlement. Please ensure all food complies with allergy guidelines. Contact your programme for detailed information. Programmes, surcharges, and activities may change; check our website for updates. Special Experiences incur extra costs for all attending children, regardless of participation.

# Skids School Holiday Programme operating out of Fruitvale School from 05 January to 02 February 2026

## sKids Fruitvale

40 Fruitvale Road, New Lynn  
Monday 5 January to Thursday 5 February 2026

**0800 274 172**  
Site Ph: 027 211 4999

Scan for pricing and to book online!

**FULL DAYS: 7AM TO 5.30PM**  
**SHORT DAYS: 8.30AM TO 3PM**

<b>MON 5 JAN</b>	<b>TUE 6 JAN</b>	<b>WED 7 JAN</b>	<b>THU 8 JAN</b>	<b>FRI 9 JAN</b>
<p><b>CAMP KICK OFF</b> Let the summer camp fun begin! Celebrate the first day of 2026 with our exciting camp Olympics, packed with games and teamwork. Then get creative and craft your own watercolour paper tents to kick off an unforgettable summer at sKids.</p>	<p><b>SPORTS SHOWDOWN</b> <b>MAKE &amp; TAKE: DIY DECORATIVE WATER BOTTLES</b> Summer Camp is getting sporty today! Our first Make &amp; Take activity of 2026 is designer drink bottles - design your own decorative water bottles to keep hydrated all summer long! Plus get ready for games, sports and exciting challenges that will keep you moving, laughing and having a blast!</p>	<p><b>WILDERNESS EXPLORERS</b> Explore, navigate, and carve your own path using teamwork, problem-solving, and creativity. Craft your very own paper plate compasses, design detailed treasure maps, and tackle fun challenges and games that test your wit's and skills. Adventure awaits around every corner.</p>	<p><b>TASTE OF SUMMER</b> Taste, create and celebrate food, fun and friendship under the sun! Step into a delicious outdoor foodie themed day with delicious s'mores from solar power, craft fun pretzel necklaces and enjoy hands on activities that bring the flavours of camp to life!</p>	<p><b>CAMPFIRE CELEBRATION</b> Wrap up an incredible week with soft dough creations to treasure as a keepsake from camp. Show off your skills and creativity in the big sKids Talent Show, take part in exciting games and challenges, and celebrate all the fun, friendships, and adventures you've shared.</p>

<b>MON 12 JAN</b>	<b>TUE 13 JAN</b>	<b>WED 14 JAN</b>	<b>THU 15 JAN</b>	<b>FRI 16 JAN</b>
<p><b>OVER THE RAINBOW</b> Get ready for a week bursting with colour. Today we explore over the rainbow as we create yummy rainbow jelly cups for a tasty treat and then bring the outdoors to life with puffy footpath painting.</p>	<p><b>SENSORY SPECTACULAR</b> <b>PREMIUM: ACTIV KIDS</b> Active Kids coaches are joining us for a fun filled mix of games, teamwork and energetic outdoor play with their summer sports session. Then, enjoy the cool fun of painting with ice, make and taste yummy treats and get hands on with sensory dough.</p>	<p><b>COLOUR SPLASH</b> <b>PLEASE BRING OLD CLOTHES FOR THE COLOUR RUN!</b> It's a bright, messy and fun-filled day of colour today. Take part in a vibrant colour run (don't forget to wear old clothes you don't mind getting colourful permanently). Dive into creative process art activities and more!</p>	<p><b>COLOUR CREW</b> <b>MAKE &amp; TAKE: DECORATE YOUR OWN KITE</b> Join our colour crew for a rainbow filled adventure! Team up for exciting challenges, creative games and colourful fun. Enjoy a special make and take activity as we decorate our own fabric kites to take home and soar into the skies!</p>	<p><b>COLOUR CARNIVAL</b> We're wrapping up colour week with an extra splash of fun! Join us to dive into a whole lot of arts &amp; crafts, games and team challenges. Exploring creativity and working together in exciting activities. From colourful creations to playful competitions it's a day full of imagination, vibrant energy and laughter.</p>

If applying for OSHC subsidy, eligibility criteria will apply. Visit [www.skids.co.nz/oshc-subsidy](http://www.skids.co.nz/oshc-subsidy) for eligibility and enrolment. Please ensure all food complies with allergy guidelines. Contact your programme for detailed information. Programmes, merchandise, and activities may change; check our website for updates. Special Experiences incur extra costs for all attending children, regardless of participation.





**SUMMER CAMP**

## sKids Fruitvale

40 Fruitvale Road, New Lynn

Monday 5 January to Thursday 5 February 2020

0800 274 172  
Site Ph: 027 211 4999



Scan for pricing and to book online!

**sKids**

FULL DAYS: 7AM TO 5.30PM  
SHORT DAYS: 8.30AM TO 3PM

**MON 19 JAN**



### COASTAL DISCOVERIES MAKE & TAKE: TREASURE CHESTS & SEA CREATURE BAG CHARMS

Kicking off Water Week with us as you construct your own wooden treasure chests to fill with secret treasures and decorate your own ocean-themed bag tags or key chains to take home. It's a day filled with imagination, wobble vibes and hands-on fun with your friends!

**TUE 20 JAN**



### SPLASHY SCIENCE

Get ready to make a splash with our STEM focused Splashy Science! Featuring unpoppable bubbles, powder shield experiments and plenty of wild water-powered experiments. Tamariki will explore how science and fun flow together through hands-on challenges, teamwork and creative discoveries.

**WED 21 JAN**



### WATER DETECTIVES

Dive into the world of solving mysteries as we design our own Secret Agent ID Badges, crack top secret codes and tackle mind-bending summer-themed STEM missions. Sharpen your detective skills through thrilling spy games, puzzles and challenges. Agent are you ready for action?

**THU 22 JAN**



### SPLASH & DASH EXCURSION: SKIDS SUMMER PARTY

Get ready for an epic day of water play, laughter and summer fun with our friends from other sKids sites! Exciting splash games to cool challenges, it's all about being active, keeping cool and making awesome summer memories. Please remember to bring your bags and towels!

**FRI 23 JAN**



### AQUATIC WILDLIFE SAFARI

Explore the magic of the sea, rivers and ponds with an aquatic-themed wildlife adventure today. Enjoy craft-themed crafts, ocean-inspired painting and splashy games. Dive deeper with STEM experiments and show your creativity in the kitchen.

**MON 26 JAN**



**Service Closed for Auckland Anniversary Day**

**TUE 27 JAN**



### BUSH CRAFT BASICS

Learn essential survival skills like building shelters using a range of materials, trying strong knots and making bush cordage from natural materials. It's a hands-on day of creativity, problem-solving and outdoor fun!

**WED 28 JAN**



### PICNIC PARTY EXCURSION: AUCKLAND ZOO

Enjoy the wildlife up close in the spectacular lush grounds of Auckland Zoo! Pack your sunny towels and get ready for a fun-filled picnic party with the animals! Back at sKids there is more fun to be had with our arts and crafts, games and learn challenges activities.

**THU 29 JAN**



### OUTDOOR EXPLORERS MAKE & TAKE: DRY BIRD HOUSES

Construct your very own birdhouse to take home! Make Morse code bracelets, craft mini bows & armbands, and share us your archery skills. It's a fun nature day full of outdoor adventures, exploring, and laughs with friends!

**FRI 30 JAN**



### SURVIVOR DAY

Test your survival skills today for the last day of Outdoor Adventures Week! Take on our Water Obstacle experiment, play summer-themed games, and work together to problem-solve and adapt just like real explorers. It's a day of discovery, teamwork and outdoor fun!

If applying for OSCAR subsidy, eligibility criteria will apply. Visit [www.skids.co.nz](http://www.skids.co.nz) to access subsidy for eligibility and entitlement. Please ensure all food complies with allergy guidelines. Contact your programme for detailed information. Programmes, lunchtimes, and activities may change; check our website for updates. Special Experience hour puts costs for all attending children, regardless of participation.



**SUMMER CAMP**

## sKids Fruitvale

40 Fruitvale Road, New Lynn

Monday 5 January to Thursday 5 February 2020

0800 274 172  
Site Ph: 027 211 4999



Scan for pricing and to book online!

**sKids**

FULL DAYS: 7AM TO 5.30PM  
SHORT DAYS: 8.30AM TO 3PM

**MON 2 FEB**



### MIND SPARKS

Get ready to stretch your mind and spark your creativity! Dive into optical illusions, discover clever challenges that will make you think in new ways. It's a day packed with curiosity, laughter, and brain-boosting fun!

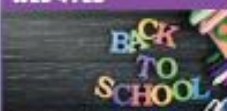
**TUE 3 FEB**



### READY SET SCHOOL!

We are gearing up for an exciting new school year while still making the most of the summer half! Together we will create collaborative art, enjoy ice games and strengthen our friendships as we get ready to start the year feeling confident, connected and full of sunshine.

**WED 4 FEB**



### BACK TO SCHOOL PARTY

Get ready to launch into Term 1 with a burst of fun and creativity at our exciting Back to School Party! We're celebrating with a day full of colour, laughter and hands-on activities including paperplane Pops.

**THU 5 FEB**



### KIWI SPIRIT

Today we celebrate the last day of Holiday HQ with our Kiwi Spirit Day! Tamariki will get hands-on with FTY Hockey Pokey and craft their own Maori Tuhakoko (kites). Enjoy loads of haka, creativity, culture and classic Kiwi pride!



If applying for OSCAR subsidy, eligibility criteria will apply. Visit [www.skids.co.nz](http://www.skids.co.nz) to access subsidy for eligibility and entitlement. Please ensure all food complies with allergy guidelines. Contact your programme for detailed information. Programmes, lunchtimes, and activities may change; check our website for updates. Special Experience hour puts costs for all attending children, regardless of participation.



**You're  
Invited**



## Glen Eden Community House

Prospect Park, 13 Pisces Road, Glen Eden  
[www.GlenEdenCommunityHouse.co.nz](http://www.GlenEdenCommunityHouse.co.nz)

**Saturday | 20 December 2025 | 9am - 12pm**

**Nau mai, haere mai!**

### Join us @ Glen Eden Community Market

Haere mai (come along) for a morning packed with kōrero (conversation), whakawhanaungatanga (building relationships), and creativity! Whether you're tamariki, rangatahi or pakeke (adults), there's something for everyone:

9:00 AM	Set Up of Activities	<b>Car Boot Market</b> Hand Crafted Goods Second-Hand Treasures Delicious Foods Hot Drinks Sugary Treats Great Vibes Awesome People
10:00 AM	Fire Truck Visit (10am) Dependant on no emergencies Sausage Sizzle Water Balloon Fight DIY Christmas Coasters DIY Christmas Crackers Hato Hone   St Johns—Learn CPR Toddler Play Room Colouring in	
11:00 AM	Popcorn the Clown Magic Show	
12:00 PM	Event Ends	

Bring your whānau (family), hoa (friends), and tāngata noho tata (neighbours) – let's celebrate kotahitanga (unity), manaakitanga (respect), and vibrant hāpori (community) vibes. We look forward to seeing you there – ka kite koe i reira! (see you there!)

**Flip over for Map and Parking**



# RAUMATI SCHOOL HOLIDAYS

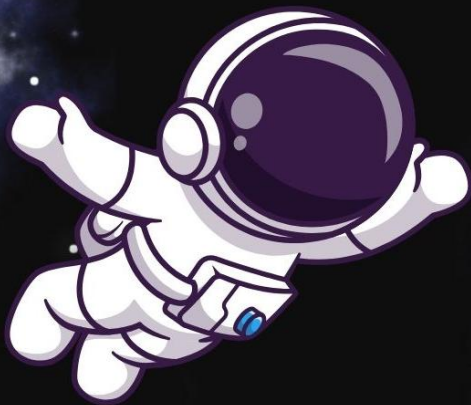
## IN NEW LYNN COMMUNITY HUB



Mon 6 Jan	2:30 - 4:30PM	Movie Afternoon : Madagascar	Drop in
Tue 7 Jan	2:30 - 4:30PM	Movie Afternoon : Madagascar 2	Drop-in
Wed 8 Jan	2:30 - 4:00PM	Physics Pathfinders Workshop	Registration required
Mon 12 Jan	10 - 11:30AM	Summer Seaside Paper Plate Craft	Drop-in
Wed 14 Jan	10:30AM - 12:30PM	Creative Woodwork Workshop w/ ReCreators	Registration required
Thu 15 Jan	10AM - 12PM	Digital Discovery Day w/ CyberNix	Drop-in
Mon 19 Jan	10:30 - 11:30AM	Grow Your Own Microgreens Workshop	Registration required
Tue 20 Jan	10 - 11:30AM	Make A Clay Robot w/ Te Toi Uku	Drop-in
Thu 22 Jan	11AM - 12:30PM	Litter Hunt & DIY T-Shirt Bag w/ WasteWise	Registration required
Sat 24 Jan	10AM - 12:30PM	Summer Fun In The Park	Drop-in
Thu 29 Jan	2 - 4 PM	Lotions & Potions Workshop <u>for Teens</u> w/ ReCreators	Registration required

# EPIC HOLIDAY WORKSHOP

IS YOUR CHILD OR  
TEEN INTERESTED  
IN TECHNOLOGY?



JANUARY 2026

For beginner & advanced coders  
Ages 9&10, 11&12, 13&14, 15 to adult  
Fun, Free & Educational!

***Sign up at [codingnz.com/holidays](https://codingnz.com/holidays)***





*Little Scientists*

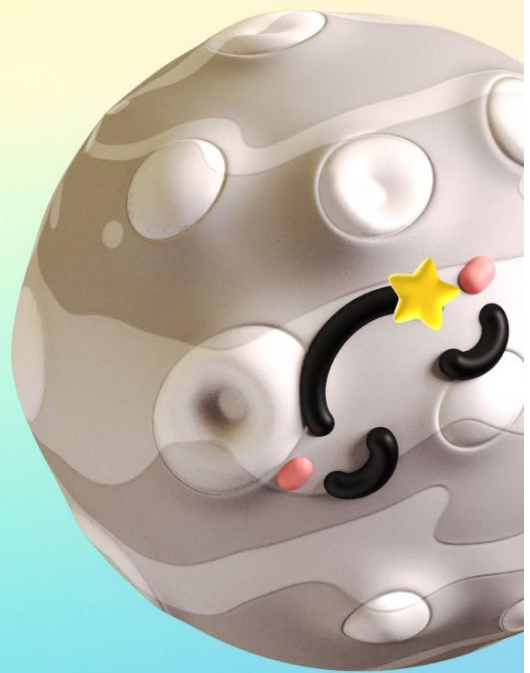
# Holiday programmes



5-10 year olds  
Loads of science fun  
to keep your children  
busy this summer!



- Hillcrest
- Hillsborough
- Freeman's Bay
- Glen Innes
- Takapuna
- Massey
- Birkenhead
- Mt Eden



**[www.littlescientists.co.nz](http://www.littlescientists.co.nz)**

# Public Health Nurse

Kia Ora Whanau

A school public health nurse is available to discuss any concerns about your child's health, growth and development. This includes health assessments, health promotion, immunisation and home visiting. They are also able to help with skin and ear infections, asthma and eczema, bedwetting and soiling, hearing and vision concerns, linking to health and social services and advice about any other health concerns.

They can be contacted via [childandfamilywest.wth@waitematadhb.govt.nz](mailto:childandfamilywest.wth@waitematadhb.govt.nz).

Nga Mihi

Public Health Nurse  
Child & Family West  
Level 1 Snelgar Building  
55-77 Lincoln road, Private bag 93-115  
Mob. **021 242 3051 – Change of number**  
[childandfamilywest.wth@waitematadhb.govt.nz](mailto:childandfamilywest.wth@waitematadhb.govt.nz)



**Visionwest's  
Foodtogether Fruit  
& Vegie Pop-Up**

**Every Friday, 12pm – 2pm**

Visionwest's Food Together Fruit and Vegie Pop-up store is open to anyone. Purchase around \$30 worth of fruit and vegies for \$15. You must order in advance.

**To pre-order go to:**  
[www.foodtogether.co.nz/products/vision-west-pop-up](http://www.foodtogether.co.nz/products/vision-west-pop-up)

*Come along to 97 Glendale Road between noon and 2pm on your chosen Friday to collect your fruit and vegies.*





PLEASE SUPPORT OUR ADVERTISERS WHO ARE SUPPORTING OUR SCHOOL

**educatum**

THE EDUCATION CONTINUUM...

Supporting young learners to gain  
**incremental improvement**  
with tutoring tailored to their unique needs.

**FLEXIBLE LEARNING**

GROUP TUITION PERSONAL TUITION	YEAR 1-13 MATHS	YEAR 7 - 10 SCIENCE	NCEA & CAMBRIDGE
---	--------------------	------------------------	---------------------

Contact us today to discuss how our unique approach  
can help your child reach their true learning potential.

Visit [www.educatum.nz](http://www.educatum.nz) | FREEPHONE 0800 355 755

**freshchoice glen eden**

Proud to support  
**Glen Eden Primary School**

142 West Coast Road, Glen Eden

Phone 813 9030

Open 7am - 10pm, 7 days.

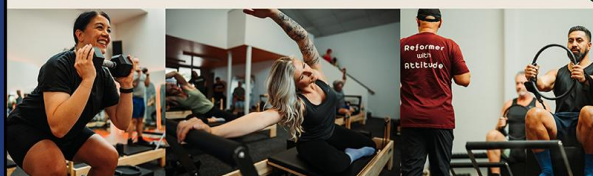


Use Code:  
**GE50**

**Rebel**  
PILATES

Reformer with Attitude  
25 Veronica St, New Lynn

**50% OFF**  
**5 Class Trial**



**FREE**  
INTRODUCTORY  
LESSON / ASSESSMENT  
3rd FAMILY  
MEMBER FREE  
TERM DISCOUNTS APPLY

**All Ages 3 Months to 80 plus**  
**BEGINNER AND ADVANCED**  
**CLASSES**  
**AVAILABLE 7 DAYS**

Monday to Friday 3.30pm to 6.00pm

Saturday and Sunday 9.00am to 1.30pm

Classes for all ages from 3 months also available 7 days

**SPECIALS  
OFTEN  
AVAILABLE**



**Waterhole Swimming Centre**

Parrs Park, West Coast Rd, Glen Eden

Phone 09 818 2312

[www.waterholeswimcentre.kiwi](http://www.waterholeswimcentre.kiwi)



**RSA GLEN EDEN RSA**

[www.glenedenrsa.co.nz](http://www.glenedenrsa.co.nz) • Ph: 818 4219 or see our facebook page

Thursday Night Club Night - Jokers Wild, Monster Meat Raffles, Quiz Night & more

Friday Nights - Karaoke • Sky Sports on our big screen TVs • Meat Pack Raffles

Saturday Nights - Bands/Shows Sunday Sessions - Music 4pm to 7pm • Restaurant opens 5.30pm



**The Foothills Restaurant**  
**All Welcome**  
**Great Food Great Prices**

Lounge Hire available for Functions • Yearly membership only \$40



**Glen Eden Community House**

*We offer:*

Before & After School Care  
School Holiday Programmes  
Van pickup and drop off to GEPS  
MSD Approved for OSCAR  
Subsidies

*Affordable, caring, committed and experienced staff  
Small numbers allows for a friendly environment*

**13 Pisces Road, Glen Eden**

Phone: 09 818 2194 / 021 133 0358

[osc@glenedencommunityhouse.co.nz](mailto:osc@glenedencommunityhouse.co.nz)

[www.glenedencommunityhouse.co.nz](http://www.glenedencommunityhouse.co.nz)

**Rosemary Giborees**  
**Residential Sales**

With 25 years in Real Estate,  
you will not be disappointed  
with my marketing and negotiating  
skills. Put your home in my capable  
hands, so you can achieve the top  
price you're looking for.

Call or Text **027 283 3140**  
or Email [r.giborees@barfoot.co.nz](mailto:r.giborees@barfoot.co.nz)

**BARFOOT  
THOMPSON &**



*Living life your way.*

**VILLAS • APARTMENTS  
ON-SITE HOSPITAL**



**GREENVIEW PARK**  
RETIREMENT VILLAGE  
& TERENCE KENNEDY HOUSE

[www.greenviewpark.co.nz](http://www.greenviewpark.co.nz)

To advertise on this newsletter and support the school, please contact Newsletters Unlimited, Ph/Fax: 09 817 3867, or Email: [newsletters@xtra.co.nz](mailto:newsletters@xtra.co.nz)  
[www.newslettersunlimited.co.nz](http://www.newslettersunlimited.co.nz)

09/25