



# Glen Eden Primary School Newsletter

Issue 38  
Week 9 | Term 4

## Kia Ora GEPS Whānau

The colour run prizes have been ordered and should be at school in about a week - perfect timing for Xmas! Check out the video that Mrs Hogan has put together which captures the fun of the day.

<https://www.facebook.com/geps.school.nz/> Another massive thank you to everyone for the huge support. The school received over \$13000 due to your fundraising efforts!

On Friday the monitors had a fabulous time at Parakai Pools as a reward for all of their hard work in 2025. Thanks to all of these tamariki who gave service to GEPS and thanks to Kathryn Arbon for organising this trip.

Last week our athletes competed at the inter school zone day. Mr Shouaib was super impressed with the team and there were some awesome results which were: Malaina Ta'akimoeaka- Nuuausala 1st place 10 year old girls 100m sprints, Aseli Mahina 2nd place 9 year old boys 100m sprints, Rhea Teleiai 3rd place 11 year old girls 60m sprints, Nevaeh Hamiora 3rd place 10 year old girls 60m sprints and Ovilani Abudu 3rd place 9 year old girls shot put.

Next week, on Wednesday, students will meet their 2026 classmates and teacher. All information about this will be emailed home to whānau before the end of the year. This will also have details about the start of the year and stationery etc.

A reminder for those of you who are planning to attend, prizegiving is on Friday 12 December at 11am. You will be notified earlier if your child will be receiving a prize and/or a certificate this year.

Some exciting news for our GEPS families over summer! The BOT have received funding from the Waitakere Local Board so that the pool can be opened over the holiday period. In January, the pool will be open for 5 hours per day, 6 days a week and will be free for the public. We are really happy to be able to offer this as we have been trying to get this to happen for years.

*Donna Soljan*

Glen Eden Primary School  
3 Glenview Rd, Glen Eden  
Auckland 0602  
☎ (09) 818 6686  
✉ [office@geps.school.nz](mailto:office@geps.school.nz)

[www.geps.school.nz](http://www.geps.school.nz)



Kairangi



Whanaungatanga



Manaakitanga



Ako

# Happenings

## T4 WK9/10 2025

DATES	HAPPENINGS
Tuesday 02 December Lunch – Mac n Cheese & garlic bread	Tui Team @ Orewa
Wednesday 03 December Lunch – Butter Chicken with rice & roti	
Thursday 04 December Lunch – KFC Lunchbox with pineapple	Year 6 Dance 6-8pm
Friday 05 December Lunch – Pizza with moogurt, carrot sticks & pineapple	Mayow Fun Day
Monday 08 December Lunch – Chicken Sub with hash sticks, carrot sticks & pineapple	
Tuesday 09 December Lunch – Meatball Pasta with garlic bread	BOT Meeting @ 6pm
Wednesday 10 December Lunch – Chilli & corn chips with fresh fruit	
Thursday 11 December Lunch – Lasagne & mixed veg	
Friday 12 December Lunch – Pizza with moogurt, carrot sticks & pineapple	Privegiving @ 11am
NOTES: Term 4 finishes Term 1 2026 starts	Tuesday 16 December 2025 Tuesday 03 February 2026



**RAIN OR SHINE!**

**FREE  
ENTRY!**



# FRIENDS OF ARATAKI KIDS DAY!

**Sunday 7 December 2025**

**11am - 3pm**

**Arataki Visitor Centre, 300 Scenic Drive, Nihotupu**



**Join us for the annual Friends of Arataki Kids Day!**

- The Amazing Bug man
- Roskill Rovers marshmallows
- The Eel Whisperer
- Fire brigade and displays
- Bouncy Castle
- Waicare water
- Face painting
- Sausage sizzle (cash only)
- monsters... and more!

**Parking:** Kids Day parking is at 221 Scenic Drive with a free shuttle running to and from Arataki. Thanks to Montana. Parking is limited, please carpool when possible.

**For more information visit [facebook.com/aratakivisitorcentre](https://facebook.com/aratakivisitorcentre)**





**You're  
Invited**



## Glen Eden Community House

Prospect Park, 13 Pisces Road, Glen Eden  
[www.GlenEdenCommunityHouse.co.nz](http://www.GlenEdenCommunityHouse.co.nz)

**Saturday | 20 December 2025 | 9am - 12pm**

**Nau mai, haere mai!**

### Join us @ Glen Eden Community Market

Haere mai (come along) for a morning packed with kōrero (conversation), whakawhanaungatanga (building relationships), and creativity! Whether you're tamariki, rangatahi or pakeke (adults), there's something for everyone:

9:00 AM	Set Up of Activities	<b>Car Boot Market</b> Hand Crafted Goods Second-Hand Treasures Delicious Foods Hot Drinks Sugary Treats Great Vibes Awesome People
10:00 AM	Fire Truck Visit (10am) Dependant on no emergencies Sausage Sizzle Water Balloon Fight DIY Christmas Coasters DIY Christmas Crackers Hato Hone   St Johns—Learn CPR Toddler Play Room Colouring in	
11:00 AM	Popcorn the Clown Magic Show	
12:00 PM	Event Ends	

Bring your whānau (family), hoa (friends), and tāngata noho tata (neighbours) – let's celebrate kotahitanga (unity), manaakitanga (respect), and vibrant hāpori (community) vibes. We look forward to seeing you there – ka kite koe i reira! (see you there!)

**Flip over for Map and Parking**



# RAUMATI SCHOOL HOLIDAYS

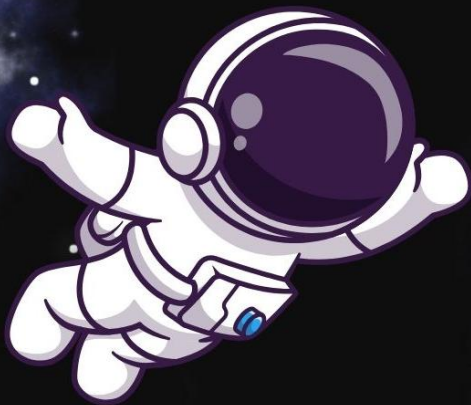
## IN NEW LYNN COMMUNITY HUB



Mon 6 Jan	2:30 - 4:30PM	Movie Afternoon : Madagascar	Drop in
Tue 7 Jan	2:30 - 4:30PM	Movie Afternoon : Madagascar 2	Drop-in
Wed 8 Jan	2:30 - 4:00PM	Physics Pathfinders Workshop	Registration required
Mon 12 Jan	10 - 11:30AM	Summer Seaside Paper Plate Craft	Drop-in
Wed 14 Jan	10:30AM - 12:30PM	Creative Woodwork Workshop w/ ReCreators	Registration required
Thu 15 Jan	10AM - 12PM	Digital Discovery Day w/ CyberNix	Drop-in
Mon 19 Jan	10:30 - 11:30AM	Grow Your Own Microgreens Workshop	Registration required
Tue 20 Jan	10 - 11:30AM	Make A Clay Robot w/ Te Toi Uku	Drop-in
Thu 22 Jan	11AM - 12:30PM	Litter Hunt & DIY T-Shirt Bag w/ WasteWise	Registration required
Sat 24 Jan	10AM - 12:30PM	Summer Fun In The Park	Drop-in
Thu 29 Jan	2 - 4 PM	Lotions & Potions Workshop <u>for Teens</u> w/ ReCreators	Registration required

# EPIC HOLIDAY WORKSHOP

IS YOUR CHILD OR  
TEEN INTERESTED  
IN TECHNOLOGY?



JANUARY 2026

For beginner & advanced coders  
Ages 9&10, 11&12, 13&14, 15 to adult  
Fun, Free & Educational!

***Sign up at [codingnz.com/holidays](https://codingnz.com/holidays)***





*Little Scientists*

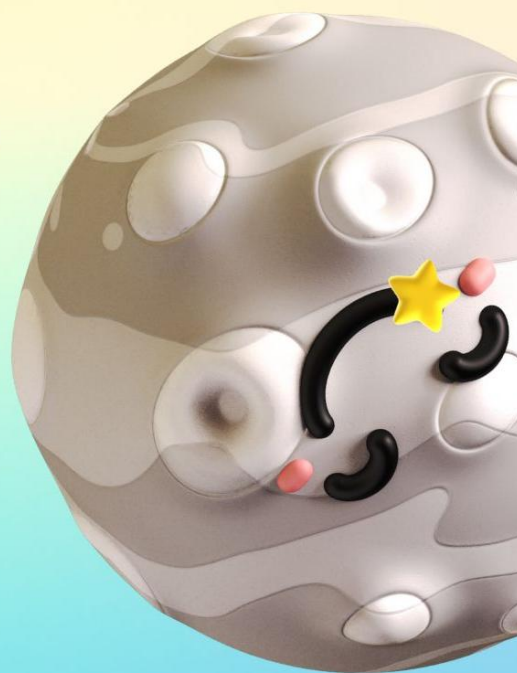
# Holiday programmes



5-10 year olds  
Loads of science fun  
to keep your children  
busy this summer!



- Hillcrest
- Hillsborough
- Freeman's Bay
- Glen Innes
- Takapuna
- Massey
- Birkenhead
- Mt Eden



[www.littlescientists.co.nz](http://www.littlescientists.co.nz)



# sKids



## Before School Care now at a reduced price.

Affordable, quality care,  
right where you need it at  
Glen Eden Primary School!

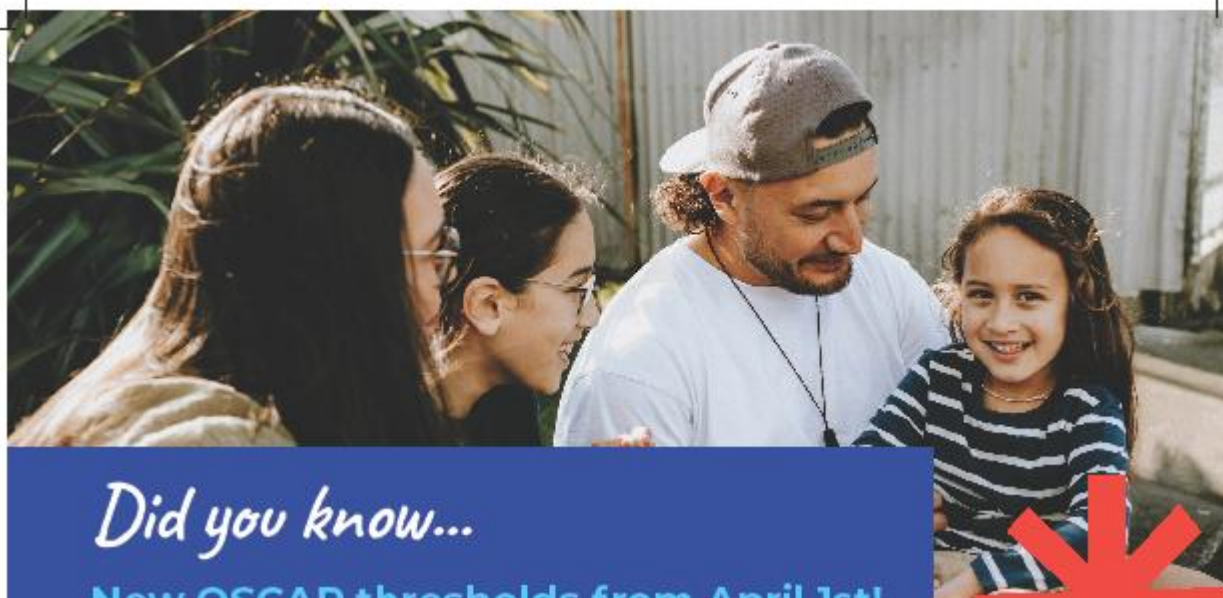
OSCAR Subsidy also available. Call us  
on 0900 274 172 for more information.

*Rise then Shine*  
7 am to 8:30 am,  
Just **\$7!**



*Secure your spot for Term 2 today!*  
**sKids.co.nz**





*Did you know...*

**New OSCAR thresholds from April 1st!**

## Get up to 50 Hours of Free Holiday Care at sKids\*

You may be eligible to receive 50 free hours of Holiday Care through the OSCAR Subsidy. Terms and Conditions apply.

### How It Works

1. Check your OSCAR eligibility.
2. Complete and confirm your Holiday Programme booking
3. Apply for the OSCAR Subsidy: Families must complete the application process and be approved by WINZ to receive the subsidy.
4. Get up to 50 hours of free care: enjoy quality care for your child this School Holiday.

If you're already receiving the OSCAR subsidy, you can email us to find out how many hours of care you can receive for free.

\*Free 50 hours apply to eligible families receiving the highest OSCAR Subsidy threshold.



Scan this QR Code to find out more and book sKids Holiday Programme!

  
**sKids**

# Public Health Nurse

Kia Ora Whanau

A school public health nurse is available to discuss any concerns about your child's health, growth and development. This includes health assessments, health promotion, immunisation and home visiting. They are also able to help with skin and ear infections, asthma and eczema, bedwetting and soiling, hearing and vision concerns, linking to health and social services and advice about any other health concerns.

They can be contacted via [childandfamilywest.wth@waitematadhb.govt.nz](mailto:childandfamilywest.wth@waitematadhb.govt.nz).

Nga Mihi

Public Health Nurse  
Child & Family West  
Level 1 Snelgar Building  
55-77 Lincoln road, Private bag 93-115  
Mob. **021 242 3051 – Change of number**  
[childandfamilywest.wth@waitematadhb.govt.nz](mailto:childandfamilywest.wth@waitematadhb.govt.nz)



**Visionwest's  
Foodtogether Fruit  
& Vegie Pop-Up**

**Every Friday, 12pm – 2pm**

Visionwest's Food Together Fruit and Vegie Pop-up store is open to anyone. Purchase around \$30 worth of fruit and vegies for \$15. You must order in advance.

**To pre-order go to:**  
[www.foodtogether.co.nz/products/vision-west-pop-up](http://www.foodtogether.co.nz/products/vision-west-pop-up)

*Come along to 97 Glendale Road between noon and 2pm on your chosen Friday to collect your fruit and vegies.*





PLEASE SUPPORT OUR ADVERTISERS WHO ARE SUPPORTING OUR SCHOOL

**educatum**

THE EDUCATION CONTINUUM...

Supporting young learners to gain  
**incremental improvement**  
with tutoring tailored to their unique needs.

**FLEXIBLE LEARNING**

GROUP TUITION PERSONAL TUITION	YEAR 1-13 MATHS	YEAR 7 - 10 SCIENCE	NCEA & CAMBRIDGE
---	--------------------	------------------------	---------------------

Contact us today to discuss how our unique approach  
can help your child reach their true learning potential.

Visit [www.educatum.nz](http://www.educatum.nz) | FREEPHONE 0800 355 755

**freshchoice glen eden**

Proud to support  
**Glen Eden Primary School**

142 West Coast Road, Glen Eden

Phone 813 9030

Open 7am - 10pm, 7 days.



Use Code:  
**GE50**

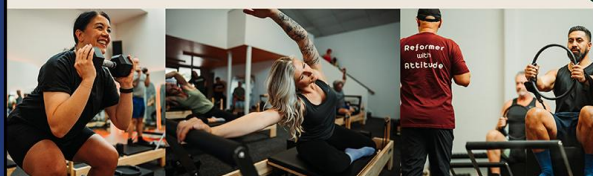
**Rebel**  
PILATES

Reformer with Attitude

25 Veronica St, New Lynn

**50% OFF**

**5 Class Trial**



**FREE**  
INTRODUCTORY  
LESSON / ASSESSMENT  
3rd FAMILY  
MEMBER FREE  
TERM DISCOUNTS APPLY

**All Ages 3 Months to 80 plus**  
**BEGINNER AND ADVANCED**  
**CLASSES**  
**AVAILABLE 7 DAYS**

Monday to Friday 3.30pm to 6.00pm

Saturday and Sunday 9.00am to 1.30pm

Classes for all ages from 3 months also available 7 days

**SPECIALS  
OFTEN  
AVAILABLE**



**Waterhole Swimming Centre**

Parrs Park, West Coast Rd, Glen Eden

Phone 09 818 2312

[www.waterholeswimcentre.kiwi](http://www.waterholeswimcentre.kiwi)



**RSA GLEN EDEN RSA**

[www.glenedenrsa.co.nz](http://www.glenedenrsa.co.nz) • Ph: 818 4219 or see our facebook page

Thursday Night Club Night - Jokers Wild, Monster Meat Raffles, Quiz Night & more

Friday Nights - Karaoke • Sky Sports on our big screen TVs • Meat Pack Raffles

Saturday Nights - Bands/Shows Sunday Sessions - Music 4pm to 7pm • Restaurant opens 5.30pm



**The Foothills Restaurant**  
**All Welcome**  
**Great Food Great Prices**

Lounge Hire available for Functions • Yearly membership only \$40



**Glen Eden Community House**

*We offer:*

Before & After School Care  
School Holiday Programmes  
Van pickup and drop off to GEPS  
MSD Approved for OSCAR  
Subsidies

*Affordable, caring, committed and experienced staff  
Small numbers allows for a friendly environment*

**13 Pisces Road, Glen Eden**

Phone: 09 818 2194 / 021 133 0358

[osc@glenedencommunityhouse.co.nz](mailto:osc@glenedencommunityhouse.co.nz)

[www.glenedencommunityhouse.co.nz](http://www.glenedencommunityhouse.co.nz)

**Rosemary Giborees**  
**Residential Sales**

With 25 years in Real Estate,  
you will not be disappointed  
with my marketing and negotiating  
skills. Put your home in my capable  
hands, so you can achieve the top  
price you're looking for.

Call or Text **027 283 3140**  
or Email [r.giborees@barfoot.co.nz](mailto:r.giborees@barfoot.co.nz)

**BARFOOT  
THOMPSON &**



*Living life your way.*

**VILLAS • APARTMENTS  
ON-SITE HOSPITAL**



**GREENVIEW PARK**

RETIREMENT VILLAGE  
& TERENCE KENNEDY HOUSE

[www.greenviewpark.co.nz](http://www.greenviewpark.co.nz)

To advertise on this newsletter and support the school, please contact Newsletters Unlimited, Ph/Fax: 09 817 3867, or Email: [newsletters@xtra.co.nz](mailto:newsletters@xtra.co.nz)  
[www.newslettersunlimited.co.nz](http://www.newslettersunlimited.co.nz)

09/25